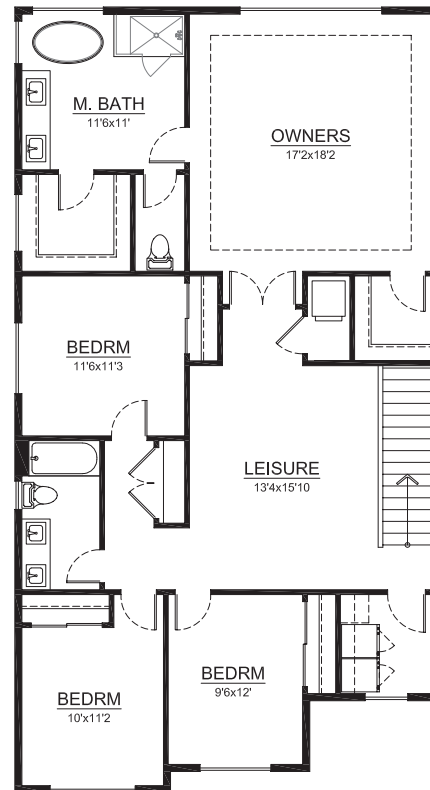
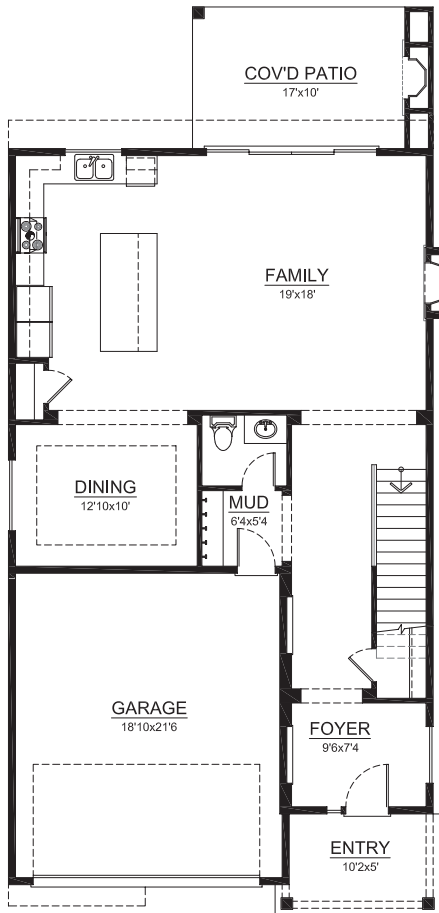


THE SILVER MAPLE



Total Living: 2,622 sf.
Bedrooms: 4
Bathrooms: 2.5
Garage: 2-Car
Special Features: Covered Back Patio, Leisure Loft on Second Level



Call Rick Seddon . (253) 279.1986 // SeddonMarketing.com

PLEASE NOTE: In a continuous effort to balance market demands for quality and affordability, the builder of this property reserves the right to change plan specifications, prices and availability without notice.